



# RFC1 Polyclonal Antibody

<b>Catalog No</b>	YP-Ab-16796
<b>Isotype</b>	IgG
<b>Reactivity</b>	Human;Rat;Mouse;
<b>Applications</b>	WB;IHC;IF;ELISA
<b>Gene Name</b>	RFC1
<b>Protein Name</b>	Replication factor C subunit 1
<b>Immunogen</b>	The antiserum was produced against synthesized peptide derived from the C-terminal region of human RFC1. AA range:1071-1120
<b>Specificity</b>	RFC1 Polyclonal Antibody detects endogenous levels of RFC1 protein.
<b>Formulation</b>	Liquid in PBS containing 50% glycerol, 0.5% BSA and 0.02% sodium azide.
<b>Source</b>	Polyclonal, Rabbit,IgG
<b>Purification</b>	The antibody was affinity-purified from rabbit antiserum by affinity-chromatography using epitope-specific immunogen.
<b>Dilution</b>	WB: 1/500 - 1/2000. IHC-p: 1/100-1/300. ELISA: 1/20000.. IF 1:50-200
<b>Concentration</b>	1 mg/ml
<b>Purity</b>	≥90%
<b>Storage Stability</b>	-20°C/1 year
<b>Synonyms</b>	RFC1; RFC140; Replication factor C subunit 1; Activator 1 140 kDa subunit; A1 140 kDa subunit; Activator 1 large subunit; Activator 1 subunit 1; DNA-binding protein PO-GAReplication factor C 140 kDa subunit; RF-C 140 kDa subunit; RFC140; Replication factor C large subunit
<b>Observed Band</b>	130kD
<b>Cell Pathway</b>	Nucleus.
<b>Tissue Specificity</b>	Wide tissue distribution. Undetectable in placental tissue.
<b>Function</b>	function:Interacts with C-terminus of PCNA. 5' phosphate residue is required for binding of the N-terminal DNA-binding domain to duplex DNA, suggesting a role in recognition of non-primer template DNA structures during replication and/or repair.,function:The elongation of primed DNA templates by DNA polymerase delta and epsilon requires the action of the accessory proteins PCNA and activator 1. This subunit binds to the primer-template junction. Binds the PO-B transcription element as well as other GA rich DNA sequences. Could play a role in DNA transcription regulation as well as DNA replication and/or repair. Can bind single- or double-stranded DNA.,PTM:Phosphorylated upon DNA damage, probably by ATM or ATR.,similarity:Belongs to the activator 1 large subunit family.,similarity:Contains 1 BRCT domain.,subunit:Heterotetramer of subunits



RFC2, RFC3, RFC4 and RFC5 that can form a complex

### Background

This gene encodes the large subunit of replication factor C, a five subunit DNA polymerase accessory protein, which is a DNA-dependent ATPase required for eukaryotic DNA replication and repair. The large subunit acts as an activator of DNA polymerases, binds to the 3' end of primers, and promotes coordinated synthesis of both strands. It may also have a role in telomere stability. Alternatively spliced transcript variants encoding different isoforms have been noted for this gene. [provided by RefSeq, Mar 2011],

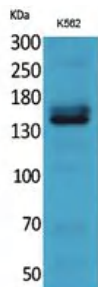
### matters needing attention

Avoid repeated freezing and thawing!

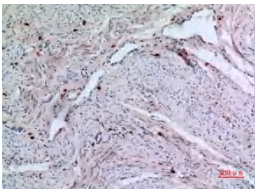
### Usage suggestions

This product can be used in immunological reaction related experiments. For more information, please consult technical personnel.

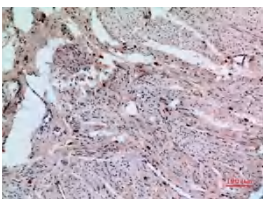
## Products Images



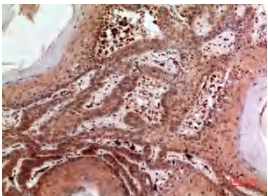
Western Blot analysis of K562 cells using RFC1 Polyclonal Antibody. Secondary antibody(catalog#:RS0002) was diluted at 1:20000 cells nucleus extracted by Minute TM Cytoplasmic and Nuclear Fractionation kit (SC-003, Inventbiotech, MN, USA).



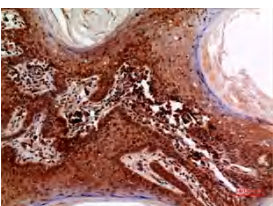
Immunohistochemical analysis of paraffin-embedded human-uterus, antibody was diluted at 1:100



Immunohistochemical analysis of paraffin-embedded human-uterus, antibody was diluted at 1:100



Immunohistochemical analysis of paraffin-embedded human-skin, antibody was diluted at 1:100



Immunohistochemical analysis of paraffin-embedded human-skin, antibody was diluted at 1:100